

QUICKTIP

StarLink Remote Control 2.0

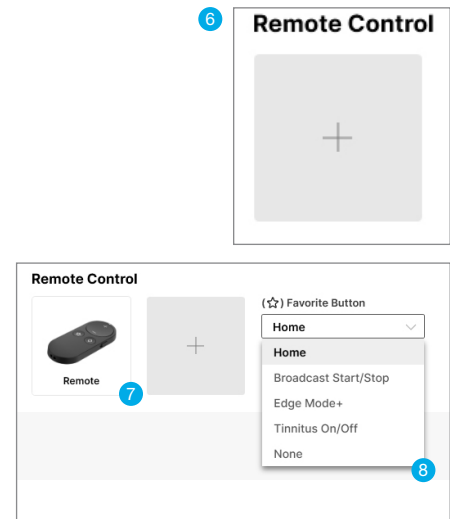


Pairing

The Remote Control 2.0 must be paired with compatible 2.4 GHz hearing aids on the Neuro Processor or Thrive Platform. Pairing occurs once, then the hearing aids and Remote will automatically recognize each other. The Remote can be paired within the fitting software or outside of the fitting software. Compatible hearing aids can be paired with one Remote.

Pairing within Pro Fit

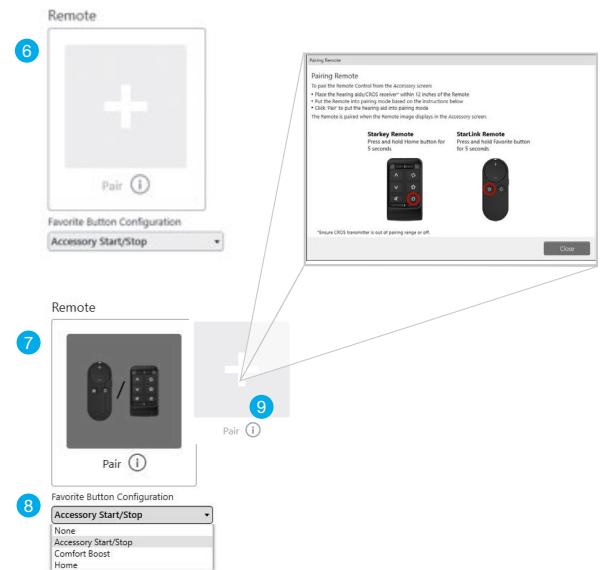
- 1 Launch Pro Fit and connect hearing aids.
- 2 Select **Accessories** from the Preparation Session in Pro Fit or from the **Flyout Menu** ☰.
- 3 Ensure the Lock switch is in the Unlock (up) position.
- 4 Place the hearing aids within 6 inches of the Remote.
- 5 Place the Remote in pairing mode by pressing the Favorite button for 5 seconds. The LED will rapidly blink.
- 6 Select **+** to put the hearing aids into pairing mode.
- 7 Pairing is successful when the Remote image displays on the accessory screen.
- 8 Use the dropdown menu to set the Favorite button configuration.
- 9 For pairing instructions, select the blue hyperlink under **Accessories**.



Pairing (Continued)

Pairing within Inspire X

- 1 Launch Inspire X, connect and detect hearing aids.
- 2 Select **Accessories** on the left navigation bar.
- 3 Ensure the Lock switch is in the Unlock (up) position.
- 4 Place the hearing aids within 6 inches of the Remote.
- 5 Place the Remote in pairing mode by pressing the Favorite button for 5 seconds. The LED will rapidly blink.
- 6 Select **Pair** to put the hearing aids into pairing mode.
- 7 Pairing is successful when the remote image displays on the accessory screen.
- 8 Use the dropdown menu below the Remote image to set the Favorite button configuration.
- 9 Select the information icon for pairing instructions if needed.






Pairing outside of the software

- 1 Power off any mobile phone or other accessories that were previously paired with the hearing aids.
- 2 Ensure the Lock switch is in the Unlock (up) position.
- 3 Power off, then power on the hearing aids to place in pairing mode.
- 4 Place the hearing aids within 6 inches of the Remote.
- 5 Press the Favorite button for 5 seconds. The LED will rapidly blink.
- 6 Once the LED turns solid for 2 seconds, both devices are paired. The Remote will recognize if the fitting is monaural or binaural and pair one or two devices accordingly.

NOTE: Accessories only pair to hearing aid (not to iPhone/app).



Use

-  **Volume:** A short press of the arrows increases/decreases the volume. Streaming volume changes occur when streaming audio from any of the 2.4 GHz streaming accessories and iOS or Android streams.
-  **Program/Memory:** Cycles through all programs assigned in the fitting software. A long press of the button will move the hearing aids to the Personal program and reset the hearing aid volume to default settings. It will also stop an audio stream from the StarLink Edge TV Streamer.*
-  **Lock/Unlock:** Unlock to make remote adjustments, Lock to prevent unintentional changes and to preserve battery life.

Use (Continued)

☆ **Favorite Button:** Activates the feature assigned to the Favorite button. The Favorite button is configured within the fitting software and available options may include:

None: No effect on the hearing aids.

Home: Moves the hearing aids to the Personal/Normal program.

Stop/Start Audio Stream: Stop or start audio streaming from a 2.4 GHz streaming accessory.

Edge Mode+^{*}: Press to activate this feature designed to achieve the best sound instantly for the current environment. Press again to deactivate this feature.

Comfort Boost^{*}: Press to optimize sound quality in noisy environments. Press again to deactivate this feature.

Jump to Program/Memory 4: Moves the hearing aids to program 4.

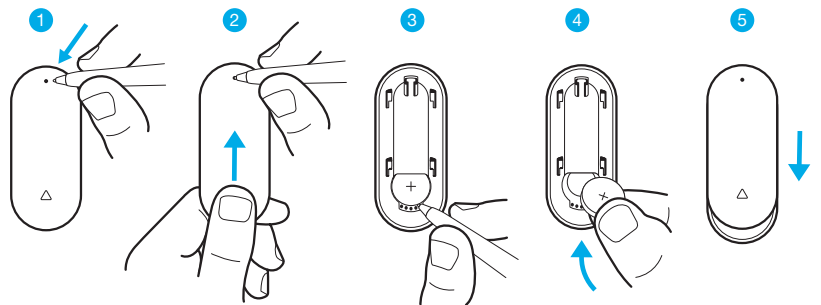
Tinnitus Stimulus On/Off: Start or stop tinnitus stimulus in the hearing aids.

Battery Information

The Remote Control 2.0 is powered by a replaceable CR 2032 battery. The expected battery life is at least one year under normal use.

To change the battery:

- 1 Insert a pointed object into the pinhole.
- 2 Slide the battery door upwards to open it.
- 3 Remove the used battery.
- 4 Insert the new CR 2032 battery.
- 5 Slide the battery door downwards to close it.



^{*}Available on select hearing aids. Contact your rep for specific information.

iOS is a trademark or registered trademark of Cisco in the U.S. and other countries and is used under license. Android is a trademark of Google, LLC. iPhone is a trademark of Apple Inc. registered in the U.S. and other countries and regions.

The Starkey logo, Edge Mode, StarLink, Thrive, Inspire and Pro Fit are trademarks of Starkey Laboratories, Inc.

©2025 Starkey Laboratories, Inc. All Rights Reserved. 2/25 FLYR4139-02-EN-ST

